

Sept-Oct 2010 Palette Scrapings

Newsletter of the Burnside Painting Group Inc.

Venue: St Matthews Homes Activities Hall, 67 Bridge Street, Kensington
Postal Address: PO Box 27, Kensington Park SA 5068



When I go out into the countryside and see the sun and the green and everything flowering, I say to myself "Yes indeed, all that belongs to me!"

Henri Rousseau

Now that Spring has arrived, for those of us inspired by nature, there will no doubt be new sources of inspiration appearing all around us, as nature responds to the longer and warmer days and the substantial winter rains we experienced.

During our winter months, Burnside Painting Group participated in SALA 2010, with paintings inspired by our surroundings in Burnside, where our weekly classes are held. The opening event on Saturday 31 July and subsequent Saturday morning, with art demonstrations by Carey Dunning and Therese Williams were very successful, with a good crowd gathered. Morning tea contributed to the sense of celebration and plenty of people browsed through the exhibition space to view our artwork.

At our recent Social Nights we've learnt valuable information about botanical art from Catherine Veide and received practical advice from the Director of Art Images gallery, Colin Burgin, who reminded us about the commercial realities of art exhibitions.

Picasso obviously viewed his art as a business, which it was. I view my business as an art, which it is. You should view your work that way too.

Donald Trump

Exciting further events are on the way, with Social Night guest speakers Richard Rogers, Therese Williams and Sophie Hann to share their knowledge and benefits of their experience with us.

I look forward to seeing you there.

Rosalie McCarthy, Publicity Officer, BPG

<http://www.burnsidepainting.com/>

Management committee

The Burnside Painting Group is run by the Management Committee, which meets at 8pm on the second Monday of each month in the side room of the hall at St Matthews Homes.

This team of volunteers works behind the scenes to bring the Group's activities to fruition, arranging classes and tutors, our social nights, exhibitions, and keep everything running smoothly. If you wish to contribute, please let us know – we appreciate any contribution you can make in helping us in our aims of contributing to art in the community.

Committee members:	Phone	Email
President	<i>Position vacant</i>	
Vice President	<i>Position vacant</i>	
Secretary	Stella Vanska 8332 3266	stella.vanska@gmail.com
Treasurer	Maureen Pope..... 8338 2807	russell.pope@bigpond.com
Minute Secretary	Jenny Haslam 8331 3573	jenhas@picknowl.com.au
Exhibition Convenor	Pat Wyllie 8364 6036	pwyllie@adam.com.au
Social Secretary	Doreen Constable 8223 1636	bryanconstable@bigpond.com
Publicity Officer	Rosalie McCarthy . 8272 2345	rosaliemcc@internode.on.net
Newsletter Editor	Andrew Bischoff .. 8297 9662	Bischoff@chariot.net.au
Librarian	Julie Lane 8337 8709	warren.lane@internode.on.net

Without portfolio:	Vivien Bishop..... vivbish@adam.com.au
	Carey Dunning cdunning@chariot.net.au
	Sue Baer wbaer@adelaide.on.net
	Nerissa Douglas nerissa@bmdstudio.com.au

SELECTION COMMITTEE

Pam Hailstone, Maria Insidioso, Jill Argent, Julie Lane, Vivien Bishop
Reserves - 1. Josie Robinson, 2. Patricia Cockshell.

Exhibition Committee:

Pam Hailstone, Jenny Haslam, Merawyn Harrison, Masako Haga, Vivien Bishop.
Also Pat Wyllie, Maureen Pope, Stella Vanska.

Calling for Volunteers for the Portraiture Classes

We have received many requests from the members for classes in Portraiture. Julia Wakefield will be starting off a series of Portraiture drawing classes on September 27th for four weeks.

It is envisaged that we will be able to offer classes in portraiture painting classes in 2011. Please watch this space.

With any portraiture class we need models! I will put a list up on the noticeboard calling for 2 willing volunteer models for each class (September 27th, October 11th, 18th and 25th). If you, your family or friends are able to help out on any of those days please:

- put your names down on the list on the noticeboard,
- or email me at burnsidepainting@gmail.com,
- or call me on 83323266,
- or speak to a committee member.

Many thanks. Stella Vanska, Secretary

CALENDAR OF EVENTS 2010

Classes Monday Mornings Term 6

Tutor: Julia Wakefield
Subject: Looking into Hans Heysen
Drawing and Watercolour Class
Dates: August 23 and 30.
September 6, 13 and 20.
Cost: \$30 for 5 weeks.

Term 7

Tutor: Julia Wakefield
Subject: Portraiture
Any drawing medium, e.g.
charcoal, pastels
Dates: September 27.
October 11, 18 and 25.
Cost: \$24 for 4 weeks.

Term 8

Tutor: Annalise Rees
Subject: Interpreting Place and
Landscape as a process
Dates: Nov 1, 8, 15, 22 and 29.
Cost: \$30 for 5 weeks.

Public holidays affecting 2010
morning classes:

Monday 4 October –
Labour Day.

Classes Wednesday Evening Term 4

Tutor: Margaret Tuckey
Subject:
Mixed Media Techniques
Dates: August 4, 11 and 18.
September 1, 8, 15 and 29.
Cost: \$42 for 7 weeks

Term 5

Tutor: Ross Morgan
Subject: Narrative and Expressive
Painting – any medium
Dates: October 6, 13 and 20.
November 3, 10 and 17.
Cost: \$36 for 6 weeks

CHRISTMAS FUNCTION

Wednesday 24 November at our
Social Night, 8pm-10pm

2010 COMMITTEE MEETINGS

8.00pm on Monday evenings:
Sep 13, Oct 11, Nov 9
Meetings are held in the hall,
St Matthews Homes,
67 Bridge St, Kensington

NEWSLETTER

(PALETTE SCRAPINGS)
DEADLINES 2010 - Oct 22, Dec 15

CONTINUOUS EXHIBITION

A selection of works by members
is on display during working
hours at the City of Burnside
Community Centre on an ongoing
basis. All works are for sale.
Address:
401 Greenhill Road, Tusmore

PAINTING OF THE QUARTER AWARDS 2010

Future dates:
Wed Sep 22 at 8pm
Wed Nov 24 at 8pm
Categories:
Experienced and Novice.
Judged by members vote.

SOCIAL NIGHTS

Sept 22: Richard Rogers
"acrylic demonstration"
Plus Painting of the
Quarter awards

Oct 27: Therese Williams will
demonstrate some quick
"sketch painting" techniques.

Nov 24: Sophie Hann –
figurative painter –
will demonstrate portraiture.
ALSO Painting of the Quarter
awards

TUITION FEES - LOOKING AHEAD!

For many years tuition fees for members
of our group have remained unchanged at
\$3 per hour (\$6 per lesson). This rate has
in the past covered tutor's fees.

However as this is no longer the case, the
Committee has decided that, commencing
in 2011, those fees should be increased to
\$4 per hour (\$8 per lesson).

The \$60 per annum membership fee -
which covers rental of hall, insurances,

part exhibition fees and newsletter - will
remain the same.

It is hoped that members appreciate the
Committee's efforts to keep our charges to a
minimum and continue to support our group.

Any suggestions and comments concerning
this increase would be appreciated. My email
address is Russell.pope@bigpond.com. Or
telephone 8338 2807.

Cheers, Maureen Pope, Treasurer

RECENT CLASSES

CAREY'S TABLE OF IDEAS

'Carey Dunning's term of six classes, which finished on July 5, was "not to be missed" and I wanted to let members know why I enjoyed the term so much.

At every class a table was set up with subject matter including objets d'art, photos, paper and oil pastels. After watching Carey demonstrate an idea or ideas, we were invited to choose something to paint from that table and work on following or expanding an idea based on what we selected.

At the first class Carey required us to paint an object from her collection of wonderful curiosities! The second week we brought along coloured paper or painted a background on two small pieces of paper and painted scenes from pages of an old book of Carey's. Next we drew with oil pastels and washed watercolour over the top. Another week we cut along sections of photos of Burnside buildings and drew through those cutouts in order to obtain an accurate drawing. This was time consuming, but amazingly worked really well!

Carey had told us that the last lesson would be a surprise. We arrived to find the table set up; but this time it was covered with a cloth, serviettes, and a tasty array of fruit cake, snowballs, mandarins, apples and pears! 'Wow!' We thought we were being treated to a lovely morning tea! To a certain extent that was true! However, the idea was to draw and paint something from that table on a background of our own choice - eg a checked or striped tablecloth or serviette. We were to paint the piece of cake, fruit, etc. as it was whole, then as it was with one bite from it, then two bites, etc. Now, how great is that?! There was a little reward for each and every effort!

I have to say that Viv's painting of red pears with a background pattern from one of the serviettes was delightful, and Alison's mandarins and peel was great, too!

Thank you Carey for a wonderfully enjoyable and inspiring 6 weeks!

Jenny Haslam

MISCELLANEOUS OTHER NEWS

Christmas Party -

24 November 2010

The Management Committee, after some deliberation, has decided to combine the Christmas Party with the last Social Night for 2010, on Wednesday 24 November.

We are hoping this may encourage more members, past members, partners, tutors and friends to enjoy a relaxed fun evening. There will be an interesting guest speaker (Sophie Hann), and this will be a great way to celebrate the state of the Festive Season."

Details are yet to be finalised, but more information will be provided in the next newsletter.

Doreen Constable, Social Secretary.

Special Birthday Celebration

Moreen Bell, who is long-time member of Burnside Painting Group, celebrated her 80th birthday in July. She specialises in watercolour, but is also known amongst painting colleagues for being a friendly helper in the kitchen.

The Monday morning class celebrated with a special morning tea, birthday cake and a very, very raucous "Happy Birthday" and it was a lot of fun!! Congratulations, Moreen, it is wonderful having you as a member.

FORTHCOMING CLASSES

Monday starting 27th Sept for 4 weeks 10am - 12 noon

Portraiture

Julia Wakefield

Due to popular demand, Julia Wakefield will conduct a four week series on drawing portraits. These classes will be an excellent basis for anyone wishing to go onto painting portraits.

Session 1

Looking at proportions and drawing in line. We will look at methods of 'sighting' by measuring with pencils and rulers, then complete a portrait using line only.

Materials: Pencils, erasers, rulers, a viewfinder*, A3 or A4 cartridge paper.

Session 2

Working in tone. The model will be placed in a strong light, which will be placed in different places to enhance different aspects of the features. The aim will be to produce two or three drawings that convey different moods.

Materials: Charcoal, charcoal pencil, conte crayon, chalk, A3 white cartridge and tinted pastel paper.

Session 3

Looking at clothing. We will look at ways of treating the tone and texture of creases and folds. The model will wear two or three different outfits.

Materials: Any of the previous listed materials.

Session 4

Capturing character. With particular reference to the placing of the hands and facial expression, we will look at some famous examples and then try to capture the character of the sitter.

Materials: Any preferred drawing materials.

*this will be supplied if you have not used one before.

View Julia's work via her website:

www.juliawakefield.com.au

Have we got your email address?

If you are a user of email, we can use this as a quick and convenient way of contacting you. If you are, please ensure that we have your email address on our membership database. If you are not sure whether or not we have it, please speak to one of the committee members.

If you don't use email, don't worry, we'll continue to use telephone or mail to contact you as usual.

FORTHCOMING CLASSES

Monday starting 1st Nov for 5 weeks 10am - 12 noon

Interpreting Place and Landscape as a Process

Annalise Rees

Originally from Kangaroo Island, Annalise graduated in 2004 with a Bachelor of Visual Art (Honours), majoring in sculpture from the Adelaide Central School of Art. In 2005 she received the Adelaide Bank Award for the most outstanding arts graduate in South Australia. Annalise is a founding member of Ripple Artist Studios at Port Adelaide.

In 2005 Annalise was a member of a group of 10 South Australian artists who went to Sanskriti Kendra, India, on an international artist residency cultural exchange. In November 2007 she was awarded the Jury Prize for her large scale drawing installation in the Daikanyama Installation event. A row of Sydney terrace houses were drawn onto the façade of a university building in downtown Tokyo.

Annalise says "I am interested in how drawing can physically occupy the spaces we inhabit. I think of drawing in both two and three dimensional terms, as something which can occupy space, generate place, as well as being representational of it. My practice is largely sculptural and installation based, grounded in drawing with a deep set interest in process and the language of materials".

"I am particularly intrigued by two dimensional languages such as maps, patterns, diagrams and the written word used to describe the three dimensional world and our experience and interaction with space; as representations of reality and a means to identify and locate place. I look at a place and how it affects our sense of self".

Class Outline:

This series of classes will explore how drawing can be used to describe and represent place. Referencing various artists and examples of their work students will develop their own approaches and strategies to visually document place. Students will explore a range of materials thinking of drawing as a tool to communicate visually. Participants will be asked to come to the first lesson with some visual material referencing a 'place' they would like to draw, e.g. photographs, drawings, sketches etc.

Materials List

Materials will be discussed in the first lesson and will be dependent on individual needs.

Basic kit required;
Range of pencils – 2B, 4B, 9B
Eraser
Scissors
Kraft/Stanley Knife
Masking Tape
A1 Cartridge paper
Visual Diary/Journal



FORTHCOMING CLASSES

Wednesday starting 6th Oct for 6 weeks 8pm - 10pm

Narrative and Expressive Painting – A Story Without Words

Ross Morgan

Ross is an artist originally from Yongala in the mid north of South Australia. When he isn't working part time, Ross paints and draws at his home-studio in Adelaide. He also tutors small art classes for a gallery/studio in North Adelaide. He works mainly in oil or acrylic on canvas.

Ross graduated in 2001 with a Bachelor of Visual Arts from the University of South Australia. His work is a reflection upon his love of human character and spirit, and the environment. He likes to take elements out of their normal context and create something new that asks the question, why?

"At the end of the day I love the fact that art is a unique form of personal expression; How we communicate or whether we want to share this with the rest of the world depends upon each individual artist. My personal belief is that



art ultimately is a form of honesty; it should never be judged, but always appreciated."

Class Outline:

The aim of this project is to produce a series of at least three artworks that when brought together, create a story.

Artists are encouraged to use whatever medium, technique and surface that seem fit. Oil and acrylic paints are not only designed for the traditional canvas, they can be manipulated and stretched to amazing limits. Experimenting with different materials, techniques and surfaces can create some incredible results.

Materials List:

- Dropsheet (these are provided but you are welcome to bring your own).
- Any painting surface, e.g. canvas, board, heavy card, glass tin, wood etc.
- Brushes, painting knives etc.
- Palette and containers to mix in and clean up with.
- Some paint, even if it is only one or two colours.
- Expensive artist quality paints are not recommended for beginners, a cheap acrylic house paint or student paint is more than adequate.

Ross will happily guide artists through their painting journey and suggest possible techniques and materials to help achieve the desired outcome.

Don't be afraid, and just have fun!



SOCIAL NIGHT September 22

8.00pm - 10.00pm

ALSO Painting of the Quarter Awards.

Guest Speaker

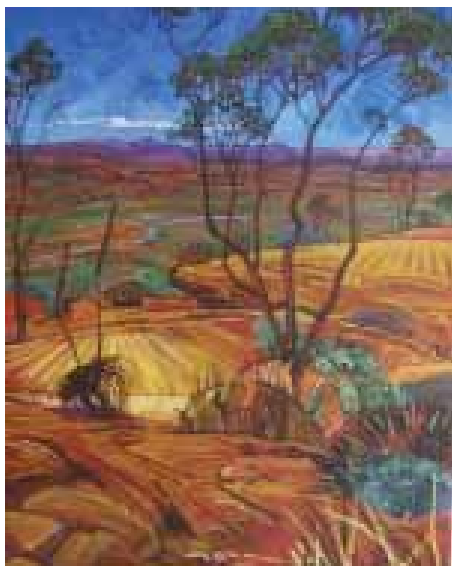
Richard Rogers

Richard Rogers is a contemporary landscape artist who paints in both acrylics and oils. He will demonstrate the use of "interactive" acrylics, which are slow-drying acrylic paints with working qualities closer to oils.

Richard is an artist with a rapidly growing reputation, who is known for iconic Australian images and the vibrancy of his style.

Born in Kyogle, New South Wales in 1954, his art education has been largely informal, consisting of miles on the brush and time spent with other artists.

During the 1980's Richard's chosen medium was batik, a technique he learnt from South Australian artist Jeremy Keyte. This led to his first solo exhibition, held at the Underground Gallery in Coober Pedy in 1985.



Dissatisfied with the colour fastness of the dyes he was using, Richard then switched to painting with acrylics. When he met aboriginal artist John Evans, it inspired in him a desire to create an art style that is identifiably Australian, one that combines the rhythm, patterns and colour of indigenous art with European art techniques.



In 2002 Richard made the decision to pursue a career as a professional. He now paints both in acrylic and oils, is a sought after tutor, has had 3 joint exhibitions with sculptor David Hamilton, been Country Arts SA's artist of the month, participated in numerous group shows, and had 12 wildlife drawings reproduced by Watermark Publishing as prints and as a card series. His work is found in public and private collections both in Australia and overseas.

Richard's work can be viewed at Kensington Gallery, Hahndorf Academy and his own studio gallery by appointment.

Please refer to his website for more details:
www.richardrogers.com.au

Previous SOCIAL NIGHT July 28

Colin Burgin, Director, Art Images

There was a good turnout for our Social Night in July to hear Colin Burgin's interesting talk about preparing art work for exhibition. He also talked not only about many of the practicalities, including successful presentation (eg of matts and frames), the types of glass available for framing work, but also of the business and commercial realities of holding viable exhibitions and the work behind the scenes that goes into an exhibition.

Art Images, located on the Parade at Norwood, runs new exhibitions approximately each month. The Gallery also has stock racks of artwork for sale, as well as providing framing services.

According to Colin, the highest selling and most popular category of artwork is landscapes.

The key factors Colin looks for in considering artists wishing to exhibit is their capacity to produce a consistent standard and volume of

high quality work. He recommends that artists wishing to have their work considered submit by email a good quality Curriculum Vitae, of up to two pages, with photos of examples of work. While we enjoy exercising our creativity, of course, Colin reminds us that there needs to be an element of business in what we do.

We extend our appreciation to Colin for a most informative and stimulating evening.

*Rosalie McCarthy,
Publicity Officer.*



Forthcoming Social Night October 27th

Therese Williams

Therese Williams studied drawing, painting and sculpture at Alexander Mackie (CAE Sydney); set design at AFTS (Sydney) and Fina Art and Film Studies at Syney University.

She has experience as a scenic artist, working for the ABC TV (Sydney), the Australian Opera and the Sydney Theatre Company; as well as designing sets and costumes for theatre.

Therese has shown drawings and paintings in group shows in Sydney and Adelaide; was a Waterhouse Finalist in 2007; and held a solo exhibition in SOMA Galleries in 2006. In 2009 she was a popular tutor for the Burnside Painting Group, teaching us among many things, tonal underpainting.

Therese is currently studying at the Adelaide Central School of Art, and she will be demonstrating some interesting new techniques for us. Therese will show us how to capture the essence of a subject for us in a series of quick 5 minute "painted sketches" These "sketches" are similar to drawing with paint; some may turn out, some may not and some could lead onto something else, allowing the artist to explore the subject. She says "it is like painting in shorthand".

Therese will also bring along some examples of recent work and will talk about "Painting in the Expanded Field". This is thinking about painting in alternate ways rather than on traditional stretched canvas. She will show how using features such as embroidery hoops and unfinished edges of linen can provide a sculptural effect to the paintings.

RECENT SOCIAL NIGHTS

August 24th

Looking Back

We had a very busy social night on the evening of August 24th. Not only did we have botanical artist, Catherine Veide doing an intricate demonstration of a camellia flower and leaves, we also had the annual Phyllis Kopp Awards, as well as some very special presentations to three of our life members by our patron, Hon. Christopher Pyne MP.

Catherine Veide

Catherine explained to us that the purpose of botanical painting is to help botanists identify a species, therefore you need very fine and exact details of all the parts of the plant including flowers, leaves, stamens and seeds. To do this, Catherine uses callipers to measure the parts of the plant so that it is drawn to the correct size. It's no wonder that Catherine uses a magnifying glass at times, such as rendering the veins in a leaf.

Catherine said it can often take 6 - 12 months to complete one painting as she will have to wait for the full life-cycle to obtain the various



parts of the plant such as buds, flowers and seeds. Catherine works methodically as she needs to work in layers, allowing

the paint to dry in between each application. Each petal of a flower can take 6 -7 layers of watercolour to get the realistic effect that she is trying to achieve. She said she always studies the plant to find the nuances of colour, such as the reflection of the sky or a flower on a leaf. Catherine's work is extremely precise and detailed, and she certainly gave us an insight and a new appreciation of the talent, time and pots of patience required for botanical art.

Phyllis Kopp Awards

There were many fabulous paintings submitted in this year's Phyllis Kopp Awards. It was wonderful to see what the members had been

working on through the year. The standard of paintings were excellent so well done to all. Of course there can only be two winners and they were:



First Prize: Nerissa Douglas



Second Prize: Deb Martin

Volunteer Certificates Presentation

We had a special presentation to three of our life members, Patricia Cockshell, Maria Insidioso and David Bunday. Their voluntary services to the Burnside Painting Group over the years were officially recognized by our patron, the Hon. Christopher Pyne MP, member for Sturt.

Christopher Pyne took the time out from his very busy schedule (in fact he had just flown back from Canberra that very evening) to present the "Certificates of Appreciation to Australian Volunteers" in person.

Congratulations to three of our very deserving members!

Here is what Christopher said about Pat, Maria and David



Patricia Cockshell

Pat, is a life member of the Burnside Painting Group. She joined almost at its very beginning. Since then she has accumulated a wonderful record of ongoing interest and service, and knowledge and experience of the Group.

She has been President for 3 years, Vice President for an incredible 28 years, Treasurer for 8 years, Minute Secretary for 4 years, Publicity Officer for 2 years, and on the Selection Committee for 7 years, and the Exhibition Committee for 3 years. At other times she has been the Librarian, the Saturday activities organizer, and a general committee member. For the past 40 years she has always had a committee position, and at times two committee positions. She is currently a reserve member on the Selection Committee.

Thank you, Pat, for your ongoing devotion and commitment to the Group and to the community.

Maria Insidioso



Maria joined the Burnside Painting Group in 1994, and immediately agreed to become Secretary. She was Secretary from 1994 to 2000 inclusive, and then went on to become President from 2001 to 2003 inclusive, but was both President and Secretary for

the whole of 2003. She was made a life member in 2004, in recognition for all her contributions to the Group. She was Publicity Officer from 2005 to 2007 inclusive. Maria has been on the Selection Committee from 2008, and still holds that position.

The year 2003 was particularly difficult for her, because of the lack of Secretary for the whole of the year. Being the person she is, she just set about managing it all. She did not have a computer, and still does not. She has a most willing and sunny disposition, and has always been willing and keen to help wherever she can.

Her other interests have been Ballroom Dancing, and Lawn Bowls, and her extended Italian family.

Thank you Maria for all your effort and support over the years.



David Bunday

David, is a life member of the Burnside Painting Group, and is now in his 80s. David joined the Burnside Painting Group shortly after its inception in the 1960s. He has held most of the committee positions over the years, and is particularly remembered for his organizing

abilities when he was in charge of the exhibitions, outdoor painting days, and painting trips. He also arranged and acted in the Christmas Social Nights, with comedy skits on the stage at the Ward Hall.

In real life David was a Civil Engineer. However he started drawing and painting in his thirties, and then he started wood carving as well. Apart from devoting much of his time to the Burnside Painting Group he loved to go on regular trips with his painting buddies to the Flinders Ranges. Many of his paintings reflect his times up there. In December 2009, David held a two day retrospective exhibition of approximately 400 of his paintings, an amazing output of work over the years.

Thank you David for all the assistance and dedication you have provided to the Group.

EXHIBITIONS

SALA FESTIVAL EXHIBITION

Our recent SALA Exhibition, held at the Burnside Community Centre from 30 July - 22 August, was a success. A good crowd of people attended the opening on Saturday morning, 31 July, and the following Saturday morning, during which Carey Dunning and Therese Williams demonstrated and taught drawing and painting techniques. For several onlookers it was their first art lesson.

Burnside Painting Group members provided morning tea including some delicious slices.

The theme, "Local Themes, Local Dreams - people, places and possibilities in the Burnside Council area" attracted much interest. During the weekdays there was a continuous stream of people enjoying the exhibition.

I would like to thank everyone who was involved in the preparation and presentation of this exhibition, and who made it such a success. We sold one painting.

Pat Wyllie, Exhibition Convenor

Thanks to everyone who contributed work for the South Australian Living Artists Festival (SALA) exhibition. The number of entries surpassed expectations and there was much high quality work for the Selection Committee, which had a difficult task to narrow down the field to the maximum possible 30 paintings to be displayed.

The Committee also thanks the City of Burnside for making the venue available, as well as some grant funding, to help our group promote our involvement in this worthwhile community event.

SALA WEBSITE - MEMBERS PAINTINGS ONLINE!

Through our registration in SALA 2010, Burnside Painting Group was entitled to promote our activities and work from our exhibition on the SALA website at <http://www.salainc.com.au/artist.php?id=1229>

We also promoted our involvement in SALA with 500 double-sided printed flyers, which members distributed in the community.

Rosalie McCarthy, Publicity Officer

CONTINUOUS DISPLAY OF PAINTINGS - BURNSIDE COMMUNITY CENTRE

Unsold paintings that were in the SALA Festival Exhibition will continue to hang in the Burnside Community Centre, and will become the Continuous Display of Paintings until November.

The next selection day is at 9.30 am on Monday 8th November at the

St Matthews Homes Activities Hall.

The next hanging day for the continuous display is at 10 am on Tuesday 16th November at the Burnside Community Centre.

The current paintings will be taken down on Tuesday 16th November at 10 am. Please be punctual for this.

See elsewhere in this newsletter for the Conditions of Entry, and the Entry Form.

Pat Wyllie.

THE BURNSIDE PAINTING GROUP INC.

ENTRY CONDITIONS FOR CONTINUOUS DISPLAY OF PICTURES, BURNSIDE COMMUNITY CENTRE

1. Exhibitors must be financial members of the Burnside Painting Group.
2. Member artists may submit three pictures each.
3. Paintings must be the artist's original work; not copies of another person's work or photographs (copyright laws must not be breached).
4. All entries will be subject to selection and must be for sale. If a work is not accepted, a red dot will be attached to it, and reasons for non-selection will be recorded by the selectors for reference by the artist. To avoid disappointment please ensure that you are aware of the Selection Committee's decision on your work prior to the opening of the display.
5. All works selected will be for hanging - Maximum size including frame - 90x 80 cms.
 - (a) Framed and ready for hanging to accepted professional practice.
 - (b) Unframed i.e. wooden stretcher with hanging facility to accepted professional practice.
6. There will be no entry fees or gallery duties.
7. Paintings must be delivered on selection day with Part A and B of the entry form completed. Each painting must be identified by Part B of the entry form, with all details correctly filled in and firmly attached to the lower left hand corner on the back.
8. Insurance for members' paintings is not provided by the Burnside Painting Group, or by the City of Burnside. All reasonable care is taken, but the Group does not accept responsibility for any damage or loss.
9. The Burnside Painting Group will take a 25% commission on any paintings sold.
10. The exhibitor agrees that photographs of their work may be taken for use by the Burnside Painting Group in its newsletter, website or other promotional material.
11. The Committee reserves the right to hang paintings wherever space is available.

CONTINUOUS DISPLAY OF PAINTINGS COMMUNITY CENTRE

Name:
 (Block letters) First Name Last Name

Phone:

Signature: I accept the Conditions of Entry and Sale.

Painting Title	Medium	Selling price \$	Size WxH <small>specify inches or CM</small>	Comments

B CONTINUOUS DISPLAY OF PAINTINGS COMMUNITY CENTRE

Firmly attach this to your picture on the
bottom left hand corner on the **back**.

Artist's Name:

Painting title:

Medium:

Selling Price \$

B CONTINUOUS DISPLAY OF PAINTINGS COMMUNITY CENTRE

Firmly attach this to your picture on the
bottom left hand corner on the **back**.

Artist's Name:

Painting title:

Medium:

Selling Price \$

B CONTINUOUS DISPLAY OF PAINTINGS COMMUNITY CENTRE

Firmly attach this to your picture on the
bottom left hand corner on the **back**.

Artist's Name:

Painting title:

Medium:

Selling Price \$

B CONTINUOUS DISPLAY OF PAINTINGS COMMUNITY CENTRE

Firmly attach this to your picture on the
bottom left hand corner on the **back**.

Artist's Name:

Painting title:

Medium:

Selling Price \$

DISCLAIMER

Views and opinions expressed in articles in Palette Scrapings do not necessarily reflect the views of The Burnside Painting Group. While every effort is made to ensure the accuracy of articles printed, responsibility is not accepted for any errors they may contain that are out of the control of The Burnside Painting Group.

OUR PRIVACY POLICY

A member's personal information collected by The Burnside Painting Group, for example name, address and telephone number, will only be used for forwarding of the Palette Scrapings and relevant information concerning the organisation of The Burnside Painting Group. This information will not be shared, sold or given to any third party without the consent of the member. Any emails will be treated as above. However, any information sent by email will be at the risk of the sender, and the organisation of The Burnside Painting Group will not be held responsible for any unintended use or disclosure of this information. Contact The Editor: Andrew Bischoff 0406779923. All letters to the editor and other material for publication in the newsletter can be emailed to bischoff@chariot.com.au or mailed to 17 Homer Road, Clarence Park 5068.

SURFACE MAIL

Print post approved AUSTRALIA
No. 503038/0004

BURNSIDE PAINTING GROUP INC.,
If undelivered please return to
The Editor, 17 Homer Road, Clarence Park 5034



**Central Artist
Supplies**

9 to 5, 5 days / Sat. 9 to 12.30pm

quality artist materials - gift ideas
watercolour, oils, acrylics, pastels
papers, board and canvases stretched
Moleskines, easels, palettes and equipment wraps

45 Osmond Tce., Norwood located in the Adelaide Central School of Art

Phone/fax Greg Hanisch 8364 2088
email: mail@centralartistsupplies.com.au